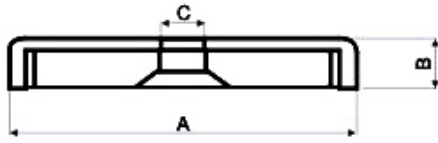


POT02 SERIES



| Item Code | POT | | | | Magnet | Coating | Pull Force (N) |
|------------|----------|----|------|------|---------|----------|------------------|
| | Material | A | B | C | | | |
| POTF02-16 | Fe37 | 16 | 4.5 | Φ3.3 | Ferrite | Cr or Zn | 14 |
| POTF02-20 | Fe37 | 20 | 6 | Φ4.2 | Ferrite | Cr or Zn | 27 |
| POTF02-25 | Fe37 | 25 | 7 | Φ5.5 | Ferrite | Cr or Zn | 30 |
| POTF02-32 | Fe37 | 32 | 7 | Φ5.5 | Ferrite | Zn | 60 |
| POTF02-32A | Fe37 | 32 | 7 | Φ5.5 | Ferrite | Zn | 72 |
| POTF02-32B | Fe37 | 32 | 6.8 | Φ5.5 | Ferrite | Cr | 72 |
| POTF02-40 | Fe37 | 40 | 8 | Φ5.5 | Ferrite | Cr | 90 |
| POTF02-40B | Fe37 | 40 | 8 | Φ5.5 | Ferrite | Zn | 130 |
| POTF02-50 | Fe37 | 50 | 10 | Φ8.5 | Ferrite | Zn | 180 |
| POTF02-50A | Fe37 | 50 | 12 | Φ6 | Ferrite | Cr | 180 |
| POTF02-50B | Fe37 | 50 | 10 | Φ6.5 | Ferrite | Zn | 180 |
| POTF02-80 | Fe37 | 80 | 18 | Φ8.5 | Ferrite | Zn | 380 |
| POTF02-90 | Fe37 | 90 | 12.2 | Φ10 | Ferrite | Zn | 490 |
| POTN02-13 | Fe37 | 13 | 4.5 | Φ3.5 | NdFeB | Zn | 12 |
| POTN02-14 | Fe37 | 14 | 6 | Φ4.5 | NdFeB | Zn | 35 |
| POTN02-14A | Fe37 | 14 | 4 | Φ5 | NdFeB | Zn | 12 |
| POTN02-15 | Fe37 | 15 | 6 | Φ4.8 | NdFeB | Ni | 35 |
| POTN02-16 | Fe37 | 16 | 4.5 | Φ3.5 | NdFeB | Zn | 55 |
| POTN02-20 | Fe37 | 20 | 4.8 | Φ3.2 | NdFeB | Zn | 95 |
| POTN02-20A | Fe37 | 20 | 6 | Φ4.5 | NdFeB | Zn | 100 |
| POTN02-20C | Fe37 | 20 | 6 | Φ4.2 | NdFeB | Ni | 100 |
| POTN02-22 | Fe37 | 22 | 6 | Φ6 | NdFeB | Zn | 125 |
| POTN02-22A | Fe37 | 22 | 6 | Φ6 | NdFeB | Cr | 125 |
| POTN02-25 | Fe37 | 25 | 7 | Φ4.5 | NdFeB | Zn | 170 |
| POTN02-25A | Fe37 | 25 | 8 | Φ5.4 | NdFeB | Ni | 170 |
| POTN02-25B | Fe37 | 25 | 8 | Φ5.5 | NdFeB | Zn | 170 |
| POTN02-25C | Fe37 | 25 | 7 | Φ5 | NdFeB | Zn | 170 |
| POTN02-28 | Fe37 | 28 | 9.5 | Φ4 | NdFeB | Zn | 280 |
| POTN02-32 | Fe37 | 32 | 8.1 | Φ5.5 | NdFeB | Zn | 330 |
| POTN02-32A | Fe37 | 32 | 7 | Φ5.5 | NdFeB | Zn | 350 |
| POTN02-38 | Fe37 | 38 | 10.5 | Φ4 | NdFeB | Zn | 500 |
| POTN02-40 | Fe37 | 40 | 8 | Φ5.5 | NdFeB | Zn | 450 |
| POTN02-42 | Fe37 | 42 | 9 | Φ6.5 | NdFeB | Zn | 400 |